

ADVANCED ELECTRONIC MANUFACTURING

DVB-T2 HD SET TOP BOX



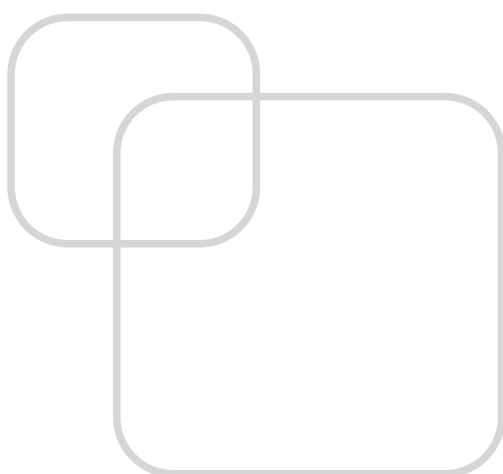
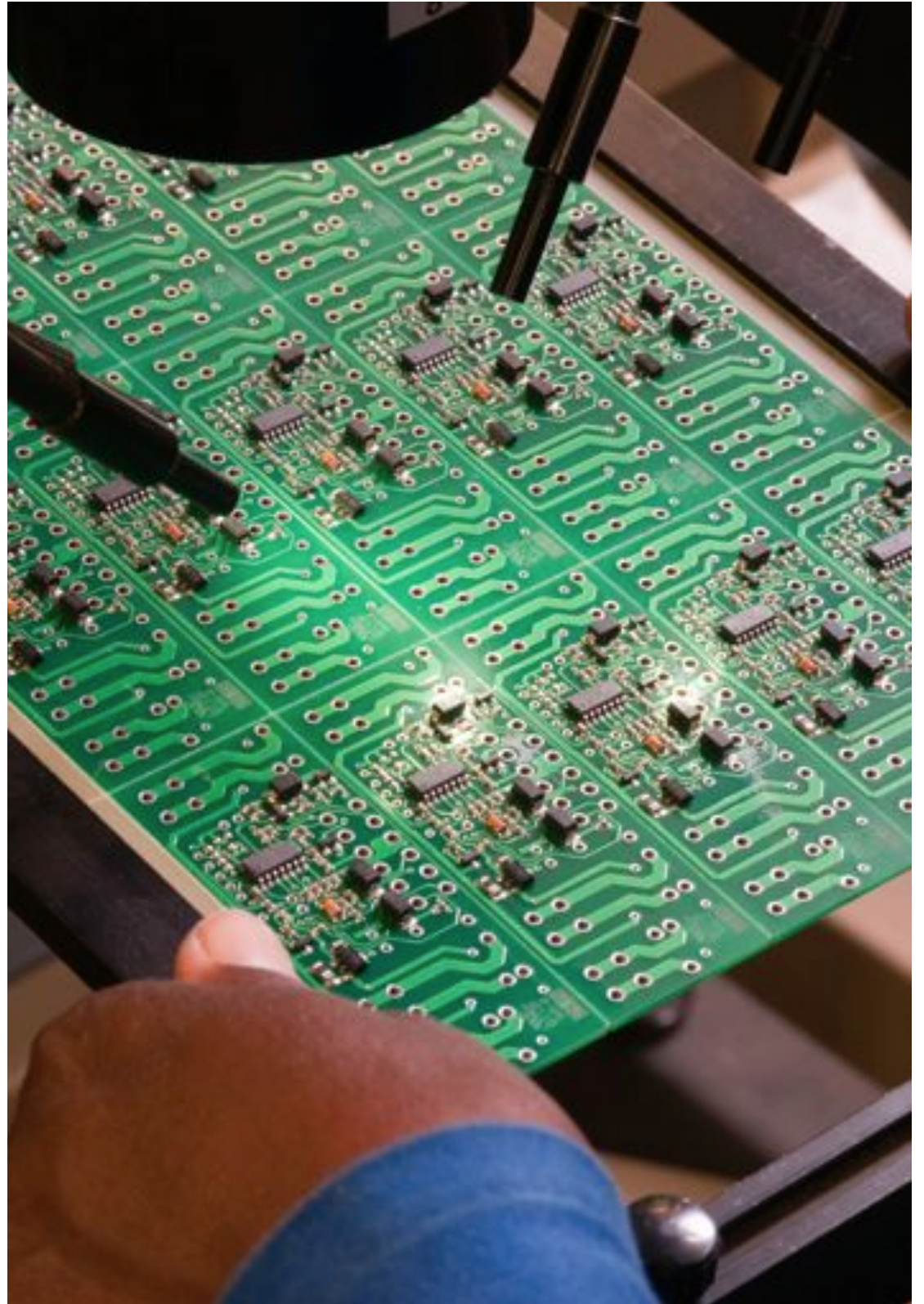


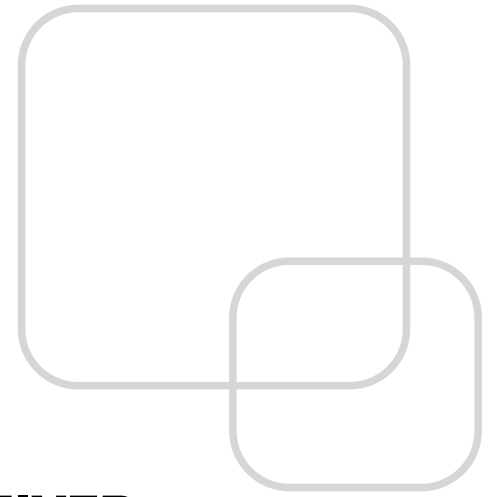
Quality Electronic Components

QEC specialises in the assembly of printed circuit boards with SMD and Leaded components, using the latest technology machinery and experienced staff members.

The company has vast experience in the assembly of both lead and lead-free products. As well as the assembly and testing of various products associated with the vehicle security market.

The QEC manufacturing facility has been **ISO 9000:2000** approved since 2006 and is subjected to annual inspection procedures to ensure continual compliance and high quality standards.





DT7105MG - DVB-T2 HD DIGITAL TERRESTRIAL TV RECEIVER

The set-top box (STB) or set-top unit (STU) is a device that connects to a television and an external source of signal, turning the signal into content which is then displayed on the television screen or other display device.

QEC manufactures these set top boxes in Johannesburg in order to meet South Africa's consumer needs

Key Features

- Free to Air & DVB-T & DVB-T2 compliant
- MPEG 2/4, H.264, for high definition video input and output (support 720p, 1080i, 1080p)
- Easy-to-Use Graphical User Interface
- Multi languages OSD

System

- EN302-755 & EN300-744 compliant
- Fully compliant with DTG6.1
- Main CPU: STi7105/STi7102, 32-bit superscalar RISC CPU 450 MHz
- Demodulator: Sony CXD2880
- Less than 1 Watt in standby mode
- Pan Scan, Letterbox- 7 days EPG Picture in graphics
- Subtitles, Teletext
- Parental lock
- LCN
- Last channel memory, favourite channels programmable
- S/W Upgrade via USB port-
- Navigation 7 keys for menu, ok, channel up/down, volume up/down, standby
- OAD
- Auto-retuning
- MHEG5 1.06 Support

Terrestrial Input Signal

- Input Frequency: UHF, 470 MHz to 862 MHz Transmission System: DVB-T COFDM & DVB-T2 OFDM
- Channel Bandwidth: 7 MHz/ 8 MHz
- Input Signal Level: -80 dBm to -20 dBm Antenna Input: 75 Ohm Female IEC-Connector
- OFDM Spectrum Mode: 1k, 2k, 4k, 8k, 16k, 32k
- Modulation Modes: QPSK, 16QAM, 64QAM, 256QAM
- Guard Interval Modes: 1/4, 19/256, 1/8, 19/128, 1/16, 1/32, 1/128
- FEC Modes: Rate 1/2, 3/5, 2/3, 3/4, 4/5, 5/6

Power

- Power: AC 110 – 240V~50/60Hz
- Max < 8 W



Audio Decoding

- MPEG- 1/2 layer I/II, AC3/AC3+/HE-ACC (up to 5.1 ch)
- Frequency Response: 20Hz~20KHz Analogue Audio Output: Stereo R/L
- Digital Audio Output: HDMI/R - SPDIF (coaxial)

Video Decoding

- MPEG-2, MP@ML for SD TV Channels MPEG-4 Part 10 HP @ L4.0 for HD TV Channels
- MPEG-4 Part 10 HP @ L3.0 for SD TV Channels Display Aspect Ratio: 16:9/4:3
- PAL/SECAM video output support
- HD Digital Video Output: HDMI output support 576i, 576p, 720p, 1080i, 1080p
- SD Video Output: Composite Video (CVBS)

Input and Output

- RF input & loop through
- 2 SCARTS (9TV, VCR)
- USB
- HDMI
- CVBS & L/R
- SPDIF (coaxial)
- Ethernet (RJ 45)



Dimensions: 250(W)x185(D)x37(H)



Contact Details:

www.qecmanufacture.co.za

ADDRESS

99 van Riebeeck Avenue | Edenvale | Johannesburg | 1610

Kyalami Business Park | 44 Kyalami Boulevard | Unit 3 Kyalami Crescent | Midrand

P.O Box 1149 | Edenvale | 1610

CONTACT

(T) +27 11 609 7935

(F) +27 11 452 6516

(M) 082 452 7605 Paul

(E) info@qecmanufacture.co.za

